



Outturn

4th Quarter 2011
Bottling List & Newsletter



**Unmissable drams
for the Festive Season!**

pages 3-13

**Unknown
heroes**

Newsletter
from page 14





SNAPSHOT

FIND YOUR WHISKY HERE



Region	Cask	Name	Age	Cask Type	Price	Page
Lowland	50.47	NEW! Sweetly appealing & refreshing	18	Refill bourbon hogshead	\$269	3
Lowland	68.1	Light, bright and agreeable	21	Refill hogshead	\$294	3
Highland	125.56	NEW! Soul-touching and heart-lifting	8	1st fill barrel	\$160	4
Highland	123.6	NEW! Rhubarb & custard	10	Refill port pipe	\$189	4
Highland	66.32	NEW! The Roly-Poly Pudding	13	Refill sherry gorda	\$214	5
Highland	69.14	Crispy duck with Cointreau	31	Refill sherry butt	\$437	5
Speyside	7.64	School tuckshop fantasy	7	1st fill barrel	\$165	6
Speyside	36.55	NEW! Deep contentment	11	Refill barrel	\$195	6
Speyside	1.163	NEW! Appealing & gratifying	11	1st fill barrel	\$195	7
Speyside	73.46	NEW! Cockle-warming citric crush	12	Refill barrel	\$199	7
Speyside	71.34	NEW! Rabbit, ginger & treacle tart	13	1st fill sherry butt	\$213	8
Speyside	76.85	NEW! The Antagonist	15	1st fill sherry butt	\$235	8
Speyside	35.51	Every flavour beans	33	1st fill barrel	\$491	9
Island	121.51	NEW! Amazing waves of sweetness	9	Refill sherry butt	\$179	9
Campbeltown	27.94	NEW! Enigmatic big floozy	11	1st fill sherry hogshead	\$199	10
Islay	127.15	NEW! A jostling jingle-bag	9	Refill barrel	\$179	10
Islay	33.112	NEW! Powerful, elegant and atmospheric	5	2nd fill sherry butt	\$125	11
Islay	33.109	NEW! Delightful intensity of sherry/smoke	11	Refill sherry butt	\$192	11
Islay	29.101	NEW! Tarred, feathered and set on fire	13	Refill butt	\$189	12
Islay	29.105	NEW! Massive and volcanic	12	Refill sherry butt	\$205	12
Jamaica	R5.1	Mint humbugs	9	Refill hogshead	\$190	13

Newsletter articles & information inside....

Whisky Magazine Awards

page 14

Unknown Heroes (A. Derbidge)

pages 15-16

Distillery Feature (Ardmore)

pages 19-20

What's On (Nov - Dec)

page 21

The tale of the Tasting Notes

The cask identifier.

The first number is the distillery code. The second is the number of casks the Society has bottled from that distillery to date.

Local Panel Comments.

The curious nature of single malt whisky means that it doesn't necessarily typify the region or even the distillery that it comes from. This makes the flavours, characteristics and idiosyncrasies described in the Tasting Notes all the more important.

Mossy mohito

Cask No. **33.87**

NOSE: The burning of compost grass clippings...
PALATE: Deliciously sweet malt...
FINISH: The smoke and peat reduce to ash...
COMMENTS: A delicious combination of malt and smoke...

UK Tasting Panel: The nose was **balanced**, multi-layered & full of flavour collisions: **soot** with fresh peach & elderflower; damp **moss**, grilled trout and lemon; **pine** needles...

Colour: **Saturn gold** Cask: **1st fill barrel** Age: **10**
Alcohol: **57.6** Outturn: **255 bottles** Allocation:

36 bottles

UK Tasting Panel Comments. Further tantalising details to help you choose.

The Outturn is the number of bottles from an individual cask. These bottles are exclusively for purchase by Members of the Society around the world.

The Allocation is especially noteworthy - that's how many bottles have been brought into Australia from each unique cask. Once they're gone, they're gone forever!

The price in \$AUD

\$181

Islay

compare notes



The Cask's region.

Useful as a starting point - but remember single casks aren't always characteristic of their region, so be prepared to have your assumptions challenged!

You are warmly encouraged to record **your own notes here.**

How to use Outturn

Our local tasting panel receives numerous samples from Scotland each month and we carefully assess and score them to determine which whiskies merit inclusion on our Bottling List. The panel assesses each sample "blind" so that personal bias or distillery reputations don't cloud our judgment. The individual scores of each panelist are tallied and only the highest scoring whiskies make it on to our shipment. However, occasionally we'll bring in other whiskies if they have other redeeming features such as rarity or to represent an under-featured region.

The first set of Tasting Notes listed are prepared by our Australian Tasting Panel, presented in the traditional format of Nose, Palate, Finish and Comments. The second set is provided by the Society's main Tasting Panel in Scotland. We trust you'll find both helpful.

The whisky with the highest aggregate score from the panel is awarded the badge *Top scoring dram* and the favourite whiskies of the two directors on our panel are noted *Director's Choice*. Should there be another whisky that scored extremely highly and just missed out on one of the above badges, this will be acknowledged as *Highly recommended*.

Unfortunately, owing to a delay in production, bottling, and shipping, a number of casks in this Outturn were unable to have samples despatched to us in time. As such, there are no local notes for these, and they had to be excluded from our deliberations as to which casks would receive the badge awards. However, we've still awarded badges for the casks we did sample and score in the usual fashion.

Lowland

Sweetly appealing & refreshing

Cask No. **50.47**

\$269

COMMENTS: This cask wasn't sampled locally, but came on the recommendation of the UK panel's Chairman. It's been three or four years since we last had an offering from this rarely seen Lowland Distillery, and our Cellarmaster was particularly impressed with the place when he visited there last May.

UK Tasting Panel: The nose offered sharp, citric fruits (lemon, green apple, gooseberry, green Jolly Ranchers), then dusty cereal and biscuit notes (shortbread, hob-nobs, dough); eventually sweetening to vanilla, barley sugars, honey and milk chocolate. The palate was sweetly appealing but refreshing at the same time – sherbet lemons, refreshers and dark chocolate. The reduced nose turned to lemon meringue pie, straw, ciabatta dough and sourdough pretzels, before bouncing back to the previous character. The palate had fruity, energizing, summertime fizz – eventually developing Gewürztraminer, mango, passion-fruit and lychee – definitely improving with time. The distillery was closed in 1993 but reopened in private hands in 2000.

Colour: **Crisp barley gold**
Alcohol: **57.2**

Cask: **Refill bourbon hogshead**
Outturn: **262 bottles**

Age: **18**
Allocation: **12 bottles**

Light, bright and agreeable

Cask No. **G8.1**

\$294

NOSE: Wow !! Tropical fruit leaps out of the glass, particularly paw paw and guava. Then comes some musk, followed rapidly by sweet confectionery, e.g. Fantaes. There's terrific depth on offer, together with some delicious oaky notes, particularly camphorwood.

PALATE: Yum! Fizzy sarsparilla and/or sweet root beer. It's gloriously sweet, yet with tasty and complex spice like roasted almonds & choc-ginger. It's full-flavoured - never a thin or dull moment. Another one of those drams where we focussed on how delicious & tasty it was, rather than drill down into describing all the little tastes and nuances that it threw at us.

FINISH: Long, sweet, deep, and rich. The finish grows in depth and complexity, leaning towards sweet dark chocolate, but never turning bitter.

COMMENTS: This is an adult's whisky - it's rich, sophisticated, classy, and with a sweetness that is deep and full. We had no notion or clue that this was grain, and were amazed to learn it wasn't a malt when we unmasked it at the end. "One of the best grain whiskies I've ever tasted" concluded the Cellarmaster, going on to say, "This is to grain whisky what Lindt is to Cadbury". (Hey, it was the end of a long night). An incredibly rare experience too - good single grain whiskies are hard enough to find as it is, but this distillery closed in 1993, making it the blue-moon nugget.

UK Tasting Panel: The nose was light, bright and agreeable, with polished pine, plant stems, sultanas, toffee and a biscuit tin containing chocolate biscuits and pink wafers. We thought the unreduced palate quite beautiful, with rum and raisin, sweet toffee and hints of woody spice. The second nosing had chocolate and golden syrup, but now the fruits came to the fore – melon, green banana, dried papaya, pears and other orchard fruits. The reduced palate represented a very positive cask impact, over time, on light, subtle spirit – lychees in syrup and eventually attractive wood notes. This interesting Tullibody grain distillery finally closed in 1993.

Colour: **Bright yellow gold**
Alcohol: **61.2**

Cask: **Refill hogshead**
Outturn: **272 bottles**

Age: **21**
Allocation: **last few**

compare notes



Soul-touching and heart-lifting

Cask No.

125.56**\$160**

NOSE: The nose is a delicious mix of wood and sweet notes. There's a good dose of honey, some crème brûlée, fudge, roasted almonds, popcorn, and boxwood. Even a touch of clementine! Water makes the mix even sweeter, displaying lavender/heather honey; orange pith; and freshly cut banana.

PALATE: Incredibly delicious, with a load of flavours revolving around the caramel family. We wrote descriptors like caramel, chewy choc-malt, caramel chews, waffles & syrup, fudge, spicy toffee and barley malt. There's also a wee hint of citrus, some kiwi fruit, dutch biscuits, and more banana. Water (note - just the tiniest dash widens and opens the dram, and brings out more choc-malt).

FINISH: Sweet, toffeed, warming and "joyfully impressive".

COMMENTS: This dram is a sweet shop. Everything is gentle, sweet, full, rounded, complete, and chock-full of flavour. By adding just a single drop of water, the experience is further heightened and widened. It's a delicious dram that thumbs its nose at sherry and peat, and stands proudly on its own two feet. It's also a dram that grows in the glass, becoming ever more appealing and enduring.

UK Tasting Panel: The nose was beautifully fruity and sweet, bursting with black cherry, tarte au citron, pecan pie apple and blackberry crumble and other decadent patisseries – also honey, vanilla, toffee, hazelnut, cherry blossom and meadowsweet. It whispered seductively 'Drink me!' – so we did – absolutely gorgeous! – apple, cinnamon, lemon curd, pineapple sprinkled with chilli and salt, oatcakes and a nip of pepper – it could have passed for an 18 year old. The reduced nose – more of the same – cherry clafoutis and apricot jam on brioche. The reduced palate had wood-sap, orange zest and preserved lemons – a soul-touching, heart-lifting dram from Tain's tipple temple.

Colour: **Candied lemon gold**Cask: **1st Fill Barrel**Age: **8**Alcohol: **60.8**Outturn: **217**

Allocation:

24 bottles**Rhubarb & custard**

Cask No.

123.6**\$189**

COMMENTS: This cask wasn't sampled locally, but then we didn't need to sample it! It's a twin sister cask to 123.3, "A Strawberry Ballerina" which was on our 3rd Qtr Outturn in 2009 and blew everyone away at our tastings around the country. The port pipe has given this a tremendous colour and incredible sweetness and spice. Get in quick – its twin sister disappeared quickly last time!

UK Tasting Panel: Creamy vanilla custard/crème brûlée on the nose to start with, with the brûlée bit increasing to crystalline sugar in espresso coffee and then the custard being joined by raspberry, plum and rhubarb crumble. Behind all this is a light winey note. At unreduced strength, the taste is sweet and tannic – Assam tea leaves and red fruits (plums?) with some tobacco in the aftertaste. Water suggests European oak: gunpowder, scorched fruitcake, over-caramelised buttery sugar. Now it has an oily texture; sweet then tannic, spicy and acceptably bitter (burnt sugar again). The distillery, on Loch Lomondside, has enjoyed a considerable revival since being acquired by Ian Macleod & Co.

Colour: **Pale amber with pink lights**Cask: **Refill port pipe**Age: **10**Alcohol: **59.5**Outturn: **728 bottles**

Allocation:

48 bottles

Highland

The Roly-Poly Pudding

Cask No.

66.32

\$214

COMMENTS: This cask wasn't sampled locally, but our Cellarmaster went through the warehouses there earlier this year and sampled from 10 or 12 different casks from similar vintages and cask types – all of them spectacular! This distillery has a slightly higher peating level than other Speyside whiskies, giving it a wonderful hint of smokiness. You can read more about this distillery on page 19.

UK Tasting Panel: Raw dough with a whiff of smoke. Dusty, coal smuts: we thought of Beatrix Potter's story about Tom Kitten... Over time the smokiness increases, soon joined by light medicinal notes (sphagnum moss, Swarfega hand wash), while the dough becomes more buttery, like Aberdeen 'rowies' (a buttery form of croissant). The taste is sweet, clean and hot, with light sulphur, antiseptic and peaty elements. Water raises European oak notes (struck matches) for a moment, then bread and butter pudding, and now the taste has treacle toffee, salty butter and charred toast in the finish. Famously smoky for an Aberdeenshire malt.

Colour: **Pale amber**
Alcohol: **58.6**

Cask: **Refill sherry gorda**
Outturn: **752 bottles**

Age: **13**
Allocation:

42 bottles

Crispy duck with Cointreau

Cask No.

69.14

\$437

NOSE: Wow. Wow! Oh wow!! One of the most rich and beautiful Speyside noses ever encountered. Where to begin? Raisin-soaked fruit; Cherry Ripe, and milk chocolate. There's also lots of herbs and spices, like walking down the vegetable aisle of a chinese grocery. The initial sherry notes disappear, and are replaced with stewed black fruits, malt, and toffee. And then, a hint of Pedro Ximenez returns. Absolutely exceptional.

PALATE: It's a bit hotter than expected, but the heat and strength is wrapped in velvet. Most of the aromas on the nose translate to their equivalent flavours on the palate, and everything is in perfect harmony. The sherry wields some textbook influence, chiefly in the form of fruitcake, honey, stewed plums, and fin apple tart.

FINISH: Not just a long finish, but an immovable one. It pitches its tent and refuses to budge. A delight in richness, warmth, length, and satisfaction.

COMMENTS: An exceptional experience from start to finish. One panellist suggested this should be savoured for only the most special occasions. Another panellist countered (quite rightly) that this was too good to let sit on the shelf and oxidise over time. It's such a balanced and delicious experience, it's probably not one to break down and over-analyse...just love it and be enthralled. This is an incredibly rare distillery, having been demolished in the early 1980's, and one which is rarely seen in either commercial or independent form. It's certainly the first time this distillery has featured on an Australian Outturn.

UK Tasting Panel: On the nose, early sauerkraut gradually turned to citrus – we found crispy duck with orange or plum sauce. We also identified rye bread, dates, wood shavings and various things polished in an antique shop. The unreduced palate was dry and rich with some spikiness but lots of sweet fruity things – toffee, syrup, chocolate and a dessert samosa with sultanas and fruit peel. Water brought cola cubes, Cointreau, marmalade and Parma ham to the nose. The palate had tingly spice, peppery smoked ham, chilli chocolate and orange peel. This Inverness distillery was replaced by a supermarket.

Colour: **Rich toffee gold**
Alcohol: **56.6**

Cask: **Refill sherry butt**
Outturn: **158**

Age: **31**
Allocation:

last few

compare notes

School tuckshop fantasy

Cask No.

7.64

\$165

- NOSE:** Yummy bakery smells - lots of dough, leaning towards fresh sourdough bread. There's also some spice (nutmeg) and the clean smell of a ream of fresh paper. With a bit of time and swirling in the glass, some very tasty fruitiness appears.
- PALATE:** An incredible basket of citrus strikes the palate - there's loads of zest, some lime, blood orange, and loads of citrus tang. This blends into kaffir lime, some herbs and spices (possibly aniseed?), and it reminded one panelist of Thai beef salad! It's very mouthwatering (juicy), round and unctuous.
- FINISH:** Increasingly mouthwatering and flavoursome. Some cherry menthol and black jacks enter the picture also.
- COMMENTS:** Spice and zest lift this out of the glass, adding loads of interest and life. It's not your average Speysider, and its relatively youthful age gives it life and vibrancy. Most of the offerings we get from this distillery are particularly old and aged in sherry. This youngster from an ex-bourbon cask is a fascinating contrast.

UK Tasting Panel: The Panel thought we were back in the school tuck-shop as we found Bounty bars, tin trays of fudge, apple turnovers, nougat & peanut praline, plums, barley sugar, blackcurrant liquorice, pencil tins, milky coffee, chalk, banana muffins and gooseberries. Very hot and lively to taste with sticky toffee pudding, mentholated mouthwash, creamy vanilla, and unripe apples. Water brought out apple pie & cold custard, rice pudding skins, and rhubarb & custard sweets, while to taste there was black pepper and custard creams. What a tuck shop! This is a top dresser malt for Chivas Regal

Colour: **Straw gold**Cask: **1st Fill barrel**Age: **7**Alcohol: **61.4**Outturn: **259 bottles**

Allocation:

last few

Deep contentment

Cask No.

36.55

\$195

- NOSE:** Fresh sap leaking from a pine tree; fresh pine needles; sarsaparilla; outdoor grassiness, and perhaps just a hint of eucalyptus. Very botanical! Lurking in the background is the distinctive hint of a spicy, fragrant honey. With exploration, this develops into peanut brittle / toffee and turns to creme brulée. The final note is a tasty toffee-malt chocolateness. A splash of water brought out.....lamingtons? No, wait....pavlova!
- PALATE:** As the spirit first hits the tastebuds, it starts where the nose left off: Toffee, sweet malt, and a chocolatey sensation. The mouthfeel and texture is strangely cooling, giving a juxtaposition of mint. Choc-mint, perhaps? On the second sip, the flavour is more textbook, with Speyside grassy maltiness being the order of the day. Water takes the dram in a decidedly tangy direction, e.g. bitter marmalade.
- FINISH:** Neat, the finish was long and sweet. With water, the finish was hot and bitter.
- COMMENTS:** We don't see this distillery very often, which is a pity, given that it churns out such robust, meaty whiskies for Diageo. Despite the high ABV, the dram is well-behaved - if anything, water made the dram seem hotter, and took away the delicious sweetness. This dram makes for wonderful Highland drinking, and, as the yanks would say, is real "sippin' whisky."

UK Tasting Panel: A sweet smelling dram that started with a surprising aroma of chilli fudge followed by shortbread, gateau de mille feuille (custard slice) and pear drops. The palate was hot and thick – comfortably mouth filling. It was as if we were taken to a botanic garden hothouse and given custard cream biscuits. Water didn't diminish the robust nose but revealed the floral notes to be geraniums. Spiced oranges and cherries emerged too. The taste was very sweet and comforting with a medium length satisfying finish. This Speyside distillery is named after a local mountain.

Colour: **Mid gold**Cask: **Refill barrel**Age: **11**Alcohol: **61.5**Outturn: **205 bottles**

Allocation:

12 bottles



Appealing & gratifying

Cask No. **1.163**

\$195

COMMENTS: This cask wasn't sampled locally, but you've only got to look at the distillery to appreciate its pedigree and credentials! Besides – the UK's notes look very appealing!

UK Tasting Panel: New things kept appearing on the nose – firstly, green bananas, pears, wood and dough, then coconut, nougat, flowers, grass and sherbet, before ending up with Golden Virginia tobacco. The palate pleased us even more – balancing exotic fruits, flower meadows and vanilla, against pepper, spice and Fisherman's Friends. The reduced nose definitely had a fruitier aspect, with blossom honey and finely fragranced soap. The reduced palate, like a good old blended whisky, was a mixture of juicy, mouth-watering Polo Fruits with just a bitter thread of citric peel – a very appealing and gratifying dram from the 'valley of the green grass'.

Colour: **Unripe barley gold**
Alcohol: **56.0**

Cask: **1st fill barrel**
Outturn: **184 bottles**

Age: **11**
Allocation: **24 bottles**

Cockle-warming citric crush

Cask No. **73.46**

\$199

COMMENTS: This cask wasn't sampled locally, but the distillery is renowned for its sweet, fruity whiskies, and it's been quite some time since we last saw an offering from No. 73. As you'll see from the UK's tasting notes, this cask is true to type.

UK Tasting Panel: The head-clearing nose offered peach schnapps, fruity white wine, lemon grass, marzipan, barley sugars and summer fruit salad, served with ice-cream and mint Matchmakers. The palate was an easy-drinking, cockle-warming melange of sherbet, gewürztraminer and lime sorbet with a creamy toffee, dulce de leche mouth-feel. The reduced nose was gloriously fresh – a citric crush of orange and lime (fruit, rind, leaves – everything) along with brown sugar, hints of leather and crunchy pea-pods. Swizzle double lollies, mushy strawberries and flying saucers floated on the reduced palate, held in place by a slightly tannic, minty after-taste. The distillery name means 'big stream'.

Colour: **Spring barley gold**
Alcohol: **57.6**

Cask: **Refill barrel**
Outturn: **176 bottles**

Age: **12**
Allocation: **24 bottles**





Rabbit, ginger & treacle tart

Cask No.

71.34

\$213

COMMENTS: This cask wasn't sampled locally, but the UK panel's Chairman was particularly enthusiastic. Bottlings from this distillery are extremely rare, and when we saw it was from a 1st Fill sherry butt – well, it selected itself!!

UK Tasting Panel: Big rich sweet aromas accosted the Panel – ginger cake, strawberry Chewits, treacle tart, cinnamon, malt loaf but also earthy mushrooms, Marigolds (the gloves not the flowers), leather and musky horses; this was when one Panellist pictured herself riding a spice-bag-laden Andalusian horse through orchards wearing leather chaps. Warm, sweet, savoury on the palate, hot and tannic with rosemary & sage, saddle polish, rabbit paella, warm chocolate sponge, dried cranberries and hazelnuts. Diluted, aromas of olive groves, red apples, hay and grilled rabbit with smooth, creamy tastes of oranges, prunes, strawberries, apricots and more rabbit. Founded as Kinflat distillery in 1810.

Colour: **Veiled bronze**
Alcohol: **56.8**

Cask: **1st fill sherry butt**
Outturn: **830 bottles**

Age: **13**
Allocation:

18 bottles

The Antagonist



Highly Recommended!

Cask No.

76.85

\$235

NOSE: Toffee apples. Pea & ham soup. It's quite meaty, and yet very fragrant: Cinnamon, juniper, ozone, musk, sherbert, and slightly floral. Water brought out a hint of confectionery, as well as coconut milk. With water, the nose reminded one panelist of Malibu.

PALATE: It's a super thick dram, and we noticed the legs crept very slowly down the sides of the glass. We found rich, thick butterscotch and toffee; some apple pie, short crust pastry, and a touch more sherbert. Water brought out some vanilla notes, particularly vanilla slice and custard creams.

FINISH: More apple pie. It's wonderfully long and brought warmth and satisfaction to our chests. A hint of cloves also thrown in at the death.

COMMENTS: This is a fascinating dram, and one that deserves time and attention. The cask type is not obvious, making it intriguing, not to mention delicious. The mouthfeel is wonderfully smooth and sultry, which belies the rich, robust and hearty dram that it actually is. Top stuff. We've had a number of casks from this distillery over the last 18 months - this is the highest scoring one to date.

UK Tasting Panel: The intriguing nose had candied fruit pieces, lemon, brown sugar and crushed mint leaves; also figs and dates, sultana cake. Lime and pickles, curry leaves and oxo cubes brought savoury contrasts. The neat palate was hot and sweet – treacle toffee and heather honey; Granny Smith apples brought freshness. With water, the nose became more floral; poppies, elderflower and plum, blackberry jam and maple syrup, banana and walnut oil. Also truffle oil and squash. The reduced palate brought thoughts of the vineyard – grape skins and must, Poire William eau de vie and black tea tannins drying out on the tongue. The distilling water comes from the Conval hills and cooling water from the river Dullan.

Colour: **Honey gold**
Alcohol: **55.2**

Cask: **1st fill sherry butt**
Outturn: **548 bottles**

Age: **15**
Allocation:

48 bottles

Speyside & Island

Every flavour beans

Cask No.

35.51

\$491

NOSE: Werthers Original. Warm butterscotch sauce. Chocolate eclairs. Musk. Cigar boxes. Buttered toast. Absolutely exudes richness, depth, and luxury.

PALATE: A flood of flavour embraced us - but, curiously, we didn't identify or write down many descriptors of actual flavours. Instead, it was all about the experience - soothing, satisfying, gloriously sweet, rich and fudge-like, syrupy, and some tantalising spice. TC was gushing: "An object lesson in perfect delivery of delicate astringency to balance the luxurious sweetness that lovingly coats every crevice of your mouth."

FINISH: Insanely long, and immensely satisfying. "Perfectly behaved oak....integration personified".

COMMENTS: "Sheer class - one of those perfect blends of malt, oak, and magic that you long for in whisky." "Allow this liquid blanket to consume you." Yes, we adored this. It's one of the most soothing, comforting, embracing drams we can recall. Like a big but gentle hug, this is a dram to rock you to sleep, content that all is well with the world. Don't you dare add water.

UK Tasting Panel: This has it all. Beef carpaccio, salt cod, leather, tobacco, plums, tinned peaches, nutmeg, iced cinnamon buns, saddles, straw (an old stable minus the horse said one), wallpaper paste, grass, cocoa (and both dark and milk chocolate). To taste it was calming, yet hot and spicy with green ginger, angelica, tarragon and blackcurrant sorbet. Water brought out a lovely lively spearmint note. There was also leather, dark chocolate and pipe tobacco. Herbal, peppery, fruity and fresh to taste, think béarnaise sauce on fresh mint and cherries served in leather tobacco pouches. This distillery is situated in Elgin on the site of an old brewery.

Colour: **Walnut**
Alcohol: **53.6**

Cask: **1st fill barrel**
Outturn: **313 bottles**

Age: **33**
Allocation:

last few

Amazing waves of sweetness

Cask No.

121.51

\$179

COMMENTS: This cask wasn't sampled locally, but we got the inside word on this one straight from the Society's Marketing Director in the UK. Keen observers will note we had some spectacular sherry casks from this distillery a year or two ago, and this one evidently blew away the UK panel.

UK Tasting Panel: The nose flooded us with waves of sweetness – dark chocolate millionaire's shortbread, light molasses, thick-cut marmalade, spiced fruit cake with plump sultanas and raisins, toffee, barley sugars. Water brought out some leather and nutty aromas (almond, marzipan, walnut, hazelnut) and Nutella crêpes flambéed in Cointreau. The unreduced palate was big but enjoyable – an iron fist in a velvet glove – Green & Black's Maya Gold (spicy orange chocolate), liquorice, almonds and oak shavings drizzled in maple syrup. With water, the palate had chocolate pralines, Crunchie bars, cane sugar and rose-water – absolutely amazing. The only distillery on this Firth of Clyde island.

Colour: **Orange mahogany (lion's mane)** Cask: **Refill sherry butt**
Alcohol: **61.3** Outturn: **642 bottles**

Age: **9**
Allocation:

60 bottles

compare notes

Enigmatic big floozy**Top Scoring Dram****Cask No.****27.94****\$199****NOSE:**

Wow! It's a funky, spicy, and complex nose that mixes sherry and soft peat in an alluring yet tantalising combination. We smelled Coconut Roughs, corn husks, Mars Bars, heather, quince, beeswax, and wet leather.

PALATE:

Now it's a trip to the bakery, where they're making some sweet treats! We all found toasted ryebread, then plain doughnuts. Dark chocolate flits around the sides, and there's also a hint of raisins (the sherry rearing its head). It develops further, with molasses, choc-malt, and tiramasu entering the frame. And finally: "Custard over Christmas pudding fried in orange juice."

FINISH:

"Forever!" wrote one, possibly still in raptures with his pudding fried in orange juice. One panelist was particularly reminded of Darrel Lea's soft-eating licorice.

COMMENTS:

An incredible alchemy of so many influences coming together for liquid gold. The hint of peat or Campbeltown air takes this to a new and delicious plane, and the cask & spirit have merged beautifully to create a rich dram quite unlike anything else in this category. A true masterpiece. Oh, and don't add water.

UK Tasting Panel: The nose was curious – an enigma – with roasted chestnuts, caramelized figs, slightly burnt raisins in a fruit cake, spit-roasted lamb and 'smouldering compost'. We also found ash, heather, marmite, grease guns and tar. The palate was described, ungenerously, as a 'big floozy' – tar, burnt raisins, over-cooked tajine, cinder toffee, dirty caramel, singed hair and barbequed sardines. The reduced nose put us in mind of the wrapping on a fish supper. The reduced palate, despite earlier hesitations, was surprisingly good and scored well – now quite creamy, with gentle sweetness – chocolate-coated toffee, Daim bars and Madeira wine. From Campbeltown's oldest surviving distillery.

Colour: **Polished chestnut**
Alcohol: **54.6**

Cask: **1st fill Sherry hogshead**
Outturn: **351 bottles**

Age: **11**
Allocation: **42 bottles**

A jostling jingle-bag**Director's Choice!****Cask No.****127.15****\$179****NOSE:**

Okay, so the peat and smoke is obvious (and delicious), but what else is going on? Heaps! We found bandaids and plaster casts, machine oil, diesel boat engines, bonfires, raspberry tart, coal tar soap, and some peanut brittle. Water brought out a touch more nuttiness.

PALATE:

Boom! Liquid smoke!! Chilli con-carne, chillis, nutmeg, tobasco, and rich, sweet smoke. The mouthfeel is chewy, and it's a HUGE dram. Despite the very high alcohol, we didn't find water necessary, but then we were three macho guys. Others may need to add a drop or two, and it certainly does tame the heat. Despite the references to heat and smoke in this description, don't be misguided - this whisky is absolutely delicious!

FINISH:

Incredibly, the textbook Islay notes emerge in the finish. After swallowing, you're suddenly hit with hot mix bitumen, creosote, charcoal embers, acrid smoke, dark ale, and every other stereotype you'd care to mention - with the exception of iodine. The high ABV also leaves a footprint!

COMMENTS:

A heavy hitter that no Islayphile should miss. It delivers a gloriously smoky and peaty experience that is totally unlike the likes of Laphroaig, Lagavulin or Ardbeg. Sensational.

UK Tasting Panel: The nose was a jostling jingle-bag of germolene, lavender, cinnamon and coal-dust, fondant lollies, sherbet fizz, peaches and citronella. The palate had us leaping all over the place (in more ways than one) – sugar-glazed donuts in a coal cellar, roasted coffee beans, white pepper, heather, lime and salt. Water (and it takes plenty) turned the nose fragrant and 'blousy' (must be the lavender) – turpentine, burnt ginger and volcanic ash. The reduced palate uncovered nice nuttiness, leather, liquorice, pastis, parma violets and flinty mineral notes. This peaty beastie from the Rinns was too much for one panellist – the rest loved it.

Colour: **Bees knees gold**
Alcohol: **65.9**

Cask: **Refill barrel**
Outturn: **256 bottles**

Age: **9**
Allocation: **54 bottles**

compare notes



Islay

Powerful, elegant and atmospheric

Cask No.

33.112

\$125

NOSE: Pitch and creosote. Burning embers. Lanolin and wet lambs' wool. Turns sweeter with time, adding lemon sherberts, eucalyptus bushfire, sweaty leather, and golden syrup.

PALATE: Band-aids and gauze. Lots of phenols, making it particularly smoky, yet without the accompanying earthiness. Water makes the peat go further and wider. With a bit of time and agitation in the glass, the signature sweetness emerges above the phenolics, revealing malty sweetness and sweet biscuits.

FINISH: Minty, seriously peaty, and a little drying. Surprisingly long, too!

COMMENTS: The peat freaks will adore this nose - it's quite remarkable and reminded one of us of the early Kilchoman releases. It's a big peat hit at one end of the spectrum - being young, the smoky spirit is carefree and roams freely without the shackles of oak. It's a great example of what peat influence can taste like before the oak gets too much say. Fans of this distillery should get in quick - it reminded us of the official "Very Young" release they did a few years back.

UK Tasting Panel: Youthful, powerful – yes – but also elegant and atmospheric – the nose seemed quintessentially Islay – peat fire smoke and bog myrtle – as well as chocolate, beeswax, salty earthiness, tar and carbolic. The unreduced palate had a tongue-shrivelling attack, yet with amazing toffee sweetness; birch tar and waxy textures. Water altered the nose to combine seafood saltiness, herbal, pine resin and citrus elements and something savoury (someone suggested lobster and chorizo). The reduced palate evoked lobster or crab from the grill, plenty of sweetness and a juicy, youthful energy – we thought it stunning. From the distillery that Glenmorangie re-awakened in 1997.

Colour: **Sunlight on Islay**

Cask: **2nd fill sherry butt**

Age: **5**

Alcohol: **60.8**

Outturn: **252 bottles**

Allocation:

18 bottles

Delightful intensity of sherry and smoke

Cask No.

33.109

\$194

NOSE: Honey cured ham, smoke, and ash. There's also a bit of iodine, and reminded one of us of Betadine Throat Gargle. It's also a little creamy, with yummy malty sweetness. Water brought out a touch of brine, and also some lavender and violets.

PALATE: Wow! This is a smouldering bonfire, mixing savoury notes (e.g. spice, animal hides) with sweet malt. And let's not forget the peat, which is hugely evident in the form of bitumen and tarmacs. Wonderfully smoky. "Sweet around the edges, but black and juicy in the middle" wrote one.

FINISH: Quite dry - presenting more ash and soot.

COMMENTS: This is a big, brash whisky that tries to behave itself. (Like Godzilla doing tai chi?) This reminded one panellist of soot, ash, smoke, engines. Like all good whiskies from this distillery, it gives you layers of complexity that you can either wade through and explore, or simply knock back and enjoy. Great stuff.

UK Tasting Panel: There seemed to be a bit of everything on the nose – maple syrup, caramel and honey, pear and blackcurrant, ginger, sherry, heather, leather, mushroom compost and burnt toast. The unreduced palate was a delightful intense combination of sherry and smoke, with roasted chestnuts, scorched heather, parma violets and something earthy, like a dunnage warehouse floor. The reduced nose held our interest, with barbecued pork, smoked fish, charred nuts and lavender fudge. The palate now had coffee cup dregs, lavender soap and a curious lime jelly after taste. The distillery, at the end of the Kildalton Road, has three pagoda roofs.

Colour: **Amber ginger**

Cask: **Refill sherry butt**

Age: **11**

Alcohol: **55.6**

Outturn: **468 bottles**

Allocation:

24 bottles

compare notes



Tarred, feathered and set on fire

Cask No. **29.101**

\$189

- NOSE:** Unmistakable! Smoky bonfires; lapsang souchong; clean hospital corridors; smoked eel; carbolic soap; and freshly laid asphalt bitumen. Water brings out some hints of fruit. Terrific stuff!
- PALATE:** The alcohol on this is high, and the initial mouthfeel is a little hot. But - more importantly - it's got BAGS of peat and smoke! Like drinking liquified charcoal, this pushed our buttons. There was more smoked eel, together with some sweet malt. A splash of water tamed the heat and brought out more spice.
- FINISH:** Surprisingly dry and cooling....almost like we sucking on the ashes of the bonfire the morning after! Oddly (and pleasantly) the finish then turned quite sweet, leaving us well satisfied.
- COMMENTS:** This is a great, pungent Islay malt that you don't have to think too much about....just tuck in and enjoy the ride. It's big and brash, and the peat and smoke are in good balance.

UK Tasting Panel: The nose combined caramel, toffee, chocolate-coated raisins and liquorice allsorts (especially aniseed ones) with straw, polished shoes and plentiful tar (tarry ropes, tarry driftwood, new-laid roads). Water brought it round to charcoal, coal-tar soap and a dangerous combination of matchboxes and thatched roofs. The unreduced palate had ash, tar, nutty toffee, nougat, hints of dark chocolate and sherry. One panellist imagined an initiation ceremony of being tarred and feathered then set on fire. The reduced palate was a delightful sweet/smoky combination, with treacle toffee and malt loaf undertones – 'the longer it sits the better it gets!' Prince Charles' favourite dram.

Colour: **Kruger Rands through a hessian curtain** Cask: **Refill butt** Age: **10**
 Alcohol: **62.8** Outturn: **587 bottles** Allocation: **12 bottles**

Massive and volcanic

Cask No. **29.105**



Director's Choice!

\$205

- NOSE:** The aroma descriptors were strangely atypical at first: We got menthol and mint; plaster of paris; fresh white paint; and that distinctive smell you get when you open a brand new tin of tennis balls. Over time, the aromas settled into more familiar territory, and one panelist remarked that "peat, smoke, and oak are almost perfectly balanced".
- PALATE:** Following from the last note about the nose, our first comments on the palate were that "smoke and oak are in good harmony". Allen's Coolmints and Allen's Chocmints were abundant, reminding one panelist of his childhood and family trips interstate. There's also fig paste, honeycomb, outdoor furniture, cigar smoke, and a certain butteriness. We unanimously remarked positively about the mouthfeel - the texture becomes increasingly chewy and is "simply gorgeous".
- FINISH:** Creaming soda, Ferrero Rocher, more mint, and a good dose of chocolate. The finish is massively long, with one foot in each of the sweet / savoury camps.
- COMMENTS:** One of the most endearing things about this dram (apart from it obviously being extremely delicious) is the balance. Peat, smoke, and oak are in perfect harmony, so that nothing jumps out and upsets the flavour profile. "Well balanced, well behaved, yet full of personality" wrote one. Another high scorer from this extremely popular distillery.

UK Tasting Panel: The nose leapt out with smoke, tar and smouldering embers (waking up the 'danger' zone of the cortex); it was also briny, with minty humbugs, some kind of green leaf and vanilla. The palate was described as "Massive!" and "Volcanic" – ash, liquorice, tar and salt, with wild boar sausages and something lovely and sweet hiding away, like a ballerina in a group of miners. Water hardly dented the nose – sweet-cured bacon, diesel exhaust and molasses. The palate seemed sweeter – chocolate in among the smoke and a lavender after-taste. One of the founders, Donald Johnston drowned after falling into 'burnt ale'.

Colour: **Deep ginger gold** Cask: **Refill sherry butt** Age: **12**
 Alcohol: **59.6** Outturn: **619 bottles** Allocation: **48 bottles**

compare notes



Jamaica

Mint humbugs

Cask No. **R5.1**

\$175

COMMENTS: This offering didn't go to our Local Panel, but as our previous allocation of 12 bottles in the third quarter shipment was snapped up, with requests for more, we have secured a few more bottles. The same mantra as last time applies – if you'd like a bottle, get in quick!

UK Tasting Panel: Surprisingly deep and complex for its age, we were transported to a tropical swimming pool at first: plastic flip-flops, wicker sun-loungers, with a dusty note ('chest of drawers'), then a rush of pumpkin-seed oil, damson vinegar and Cola-cubes... The taste blows your socks off! Sweet and peppery, after a start of 'water-wings'. Water softens the aroma and taste considerably: vanilla fudge, cherry pie and Canadian cedar (with cherries) on the nose, and a clean, mint humbug, mentholated (even clove-like) taste. One panellist produced a bottle of Coke and a lime... Delicious!

Colour: **Golden syrup**
Alcohol: **81.3**

Cask: **Refill hogshead**
Outturn: **525 bottles**

Age: **9**
Allocation: **12 bottles**

compare notes

How to order

one Go online

www.smws.com.au

24 hours a day,
7 days a week

two

Call

02 9974 3046

Monday to Friday,
9am to 5pm AEST



three Order Form (back page)

PO Box 1113
Newport NSW 2106

Email: info@smws.com.au

Fax: **02 9999 5610**

Not sure which style to go for? Questions?
Just pick up the phone and we'll find
something to suit.

Every bottle is unique so their
numbers get shorter by the day.
Once you've picked, go like the
clappers and get ordering!

**Purchase 3 Society bottlings during your membership year
and we shall waive your annual membership fee - that's a saving of \$85...!**



INDEPENDENT BOTTLER OF THE YEAR AWARD FOR 'ICONIC' WHISKY SOCIETY



**The Scotch Malt Whisky Society has scooped
12 awards in Whisky Magazine's Independent Bottler's Challenge
including the overall Icon of Whisky title for the Independent Bottler of the Year.**

The awards, now in their seventh year celebrate the best of independent whisky bottlings, acknowledging their treasured place in offering something different to the world's whisky connoisseurs.

Split into six regional categories – Campbeltown, Highland, Islands (non-Islay), Islay, Lowland, and Speyside – with three age groups in each: 12 and under, 13 – 20, and 21 and over, each bottler was allowed to enter one whisky for each section, which was then assessed by members of the editorial judging panel.

The Scotch Malt Whisky Society was one of only two independent bottlers to receive an award in each of the six categories, highlighting its offering of the widest selection of single cask, single malt whiskies in the world.

The Icon of Whisky Award, awarded to the independent bottler who scored the most points across all the categories also went to the Society along with an award for category winner in the Campbeltown region.

Gold awards were given to two of the Society's bottlings, 93.42 Explosion in a honey factory (Campbeltown, 12 years and under), commended for its smoky notes of candy floss, crème brulee and banana, and 50.41 Winter fireworks (Lowland, 13-20 years) in which the judges enjoyed the sweet touches of cardamom, mint, and farm yard notes.

Paul Miles, Managing Director of The Scotch Malt Whisky Society said; *"This award is testament to the dedication and hard work of the Society and our revered Tasting Panel of independent connoisseurs and experts who are under no obligation to bottle anything that doesn't meet the Society's high standards.*

In hand selecting the best single cask, single malt whiskies the Society ensures that our unique fellowship of whisky lovers experience only the finest."



Independent Bottler's Challenge awards list:

Icon of Whisky:

The Scotch Malt Whisky Society

Independent Bottler of the Year, Campbeltown:

The Scotch Malt Whisky Society

Campbeltown 12 years & under GOLD:

93.42 Explosion in a honey factory

Highland 13 – 20 years BRONZE:

125.43 Dancing dolls in flower meadows

Highland 21 years & over SILVER:

77.21 Crispy duck and jasmine tea

Islands (non-Islay) 13 – 20 years SILVER:

4.143 Honey on hot stones

Islay 13 – 20 years BRONZE:

3.169 Pagoda Reek Drifting over Loch Indaal

Lowland 13 – 20 years GOLD:

50.41 Winter fireworks

Lowland 21 years & over BRONZE:

22.29 Bringing in the barley

Speyside 12 years & under SILVER:

1.158 Cricketer's dram

Speyside 13 – 20 years BRONZE:

7.66 Harmonious co-existence of flavour

Speyside 21 years & over BRONZE:

104.13 An angel fallen to Earth



Unknown Heroes

by Andrew Derbidge

When was the last time you poured yourself a healthy dram of Dufftown? Or had a good swig of Miltonduff? How about a Glenburgie? Or an Allt-a-Bhainne? A Tomatin? Braeval perhaps? Was it a while ago? Have you even heard of these guys, let alone seen a bottle of their whisky at your local outlet?

What about Ardbeg? Oban? Bruichladdich? These names are more familiar, yes? And chances are you've had a dram of their product once or twice on your malt journey.

The irony here is that the first group I listed are some of the biggest distilleries in Scotland. And the second group are amongst the smallest. There's a clichéd conclusion here that you might have heard before: Size doesn't matter, it's what you do with it that counts!

In terms of distillery capacity (which doesn't always equate to how much they actually produce), figures produced for the 97 active malt distilleries tell us that their annual capacity in litres of pure alcohol varies from 10,500,000L (Glenlivet) down to 20,000L (Abhainn Dearg).

So, returning to some of the distilleries listed above and ranking them in terms of their size, Dufftown is actually the eighth largest distillery in Scotland. Miltonduff is 11th, Tomatin 13th, and Glenburgie is 18th. Elsewhere in this issue

of Outturn, you'll read about Ardmore, which is another little-known distillery, yet currently ranked 12th on this list.

Oban might be one of the so-called "Classic Malts", and widely available at most stores in Australia, yet its total capacity is a mere 670,000L, and it ranks 88th by size. Ardbeg is 79th!

The point here is that each distillery has its own place and purpose in the industry, and not all of them seek (or even need) the limelight that single malt status can bestow. For the truth is, as we've explored repeatedly, that the vast majority of malt whisky is produced for blending. Dufftown distillery, for all its size, might, history, and beauty is relatively unknown because 97% of its output goes directly into blends, particularly Bells. Glenburgie may be on 24/7 production and churning out a whopping 4.2M litres each year, but you wouldn't recognise it as a distillery if you drove past it, and – like its sibling, Miltonduff – its output goes almost entirely into Ballantines and Chivas Regal.

...it's this tiny corner of the industry where the Scotch Malt Whisky Society dives in, rummages around, and pulls out spectacular bottlings – whether the distillery is a famous brand name, or an anonymous workhorse...



Perhaps the best illustration here would be to provide some context: Glenfiddich is the largest selling single malt brand in the world, holding roughly a 15% share of the single malt market. Its annual sales are just shy of 900,000 cases. Johnnie Walker is the largest selling blended Scotch in the world, holding roughly a 17% share of the blended market. Its annual sales are an incredible 15,000,000 cases!

In fact, blended sales in some individual countries can dwarf malt's global efforts. In single malt terms, Glenfiddich's achievements are massive. Yet there are three Scotch blends produced and exported purely for the French market that each sell between one and three million cases per year. So, three blends you've never even heard of (William Peel, Label 5, and Sir Edward's), each sell more bottles per annum in France **alone** than Glenfiddich sells per annum across the entire planet!

So, in terms of sales, market share, and revenue, you can suddenly appreciate where "well-known" single malts like Talisker, Highland Park, and Bowmore sit. And yet, small as the single

malt market is, it's this tiny corner of the industry where the Scotch Malt Whisky Society dives in, rummages around, and pulls out spectacular bottlings – whether the distillery is a famous brand name, or an anonymous workhorse.

So why am I telling you all this? Because this particular issue of Outturn you're holding has within it some very special casks that we've sourced from these larger, yet relatively unknown distilleries that would normally see their casks tipped into blending vats. Ardmore (Teachers), Glenburgie (Ballantines), Bladnoch (Bells), Aultmore (Dewars), and Benrinnes (J&B Rare and Johnnie Walker) are just a few examples in this Outturn of bottlings that you'll rarely ever see as single malts – particularly in Australia. So if you're one of our many members who keeps a list and likes to tick off distilleries as you conquer them, this particular Outturn can help you realise a few more conquests!

Andrew Derbidge
Cellarmaster & NSW Manager

The Stillman's Selection is a chance to take a journey through the magic of some incredible whiskies without lifting a finger (although lifting a glass is essential!)

Over the course of 12 months we will send you three very different SMWS bottlings - that's one bottle, delivered straight to your doorstep, in Autumn, Winter and Spring. The whiskies will include a peated bottling, a sherried bottling, and a classic Highland-style bottling, cutting across a range of ages between 7 and 21 years old. Each whisky has been exclusively selected for this offer only and will NOT be available for general purchase through Outturn, nor featured at our tastings.

And, to whet your appetite, we can reveal that the first bottling is from a unique and rare cask from the other distillery on Orkney! (This distillery has never before been featured in Australia - but it's only while stocks last!) There are, of course, many more added benefits, as outlined below. So get on the phone/fax or internet and join The Stillman's Selection Club. As with any of our great drops, there's limited availability.



What's in The Stillman's Toolbag:

- 1 **Three Stillman's Selection Malts that will take you through a journey exploring different ages, styles, and regions.**
(Value \$750)
- 2 **Annual membership fee** (valued at \$85)
- 3 **One complimentary seat at a regular Quarterly Tasting**
(valued at up to \$70)
- 4 **Two Glencairn tasting glasses with Society logo**
(valued at \$35)
- 5 **A \$30 Christmas Whisky Dollar voucher at a time that makes gift-giving just that little bit easier**
- 6 **Subscription to the Society's quarterly international "Unfiltered" Whisky Magazine**
(valued at \$35)
- 7 **All postage and handling**
(valued at \$45)

**That's over \$1,000 of whisky experience!!
\$290 in three easy instalments, or
\$840 if paid in full!**

October Events diary

The period after the August/early September quarterly tastings is usually a quieter one for the Society, as we take stock and prepare for all the end-of-year fun. However, September and October this year saw a flurry of extra tastings and special events.

The Society presented a Masterclass at The Whisky Fair in Sydney on September 3rd, which was an enjoyable and well-received affair. Islay fans would be aware that Laphroaig Live was broadcast from Sydney in early October, and the Society teamed up with Laphroaig's master blender, Robert Hicks, to present "An Evening with Laphroaig" on October 5th. This was a hugely

fun and entertaining evening, with some great drams and laughs had for all involved. We also teamed up with Alison Brien from Cheese Boardroom and put on two special Whisky & Cheese nights that were official events in the Sydney Crave Food Festival. Just under 120 attendees (a combination of members, foodies, punters, and guests) attended the two evenings on October 7th and 12th respectively. And finally, we teamed up with Matt Barnett and our friends at Suntory to present "An Evening with Bowmore" in Melbourne on October 21st. It was a small-ish affair (where were you, Melbournians?), but a great chance to explore this wonderful distillery and to taste some terrific Bowmore drams.

The Perfect Festive Gift!

Striving for The Perfect Present for a whisky-loving Friend, Colleague, VIC (Very Important Client) or Loved One...? Then look no further!

The Ultimate Whisky Tasting Kit

The Scotch Malt Whisky Society's Ultimate Whisky Tasting Kit - the perfect way to take a tour of Scotch sitting in the comfort of your favourite armchair. It's also a great snapshot of the best casks and includes a Member Handbook full of words of wisdom on the water of life! Not to mention a tasting notes booklet for your own whisky musings and a Society label badge.

If you give the Ultimate Whisky Tasting Kit or a Society Bottling as a gift to someone, we shall match that gift with ONE YEAR COMPLIMENTARY MEMBERSHIP of The Scotch Malt Whisky Society for your lucky recipient.

There is no other Club like it on the planet...

And don't forget the member reward for introducing a new member to the Society - \$25 whisky dollars for you towards a future purchase.

\$180 plus \$15 delivery fee

The Scotch Whisky Aroma Nosing Kit

A nosing kit specifically designed for scotch whisky!

The kit and accompanying guide booklet, created by The Aroma Academy in the UK, will make scotch whisky nosing and tasting an even more pleasurable experience and dramatically increase your scotch whisky nosing and tasting knowledge!

This unique Scotch Whisky Aroma Nosing Kit will:

- ✓ *Introduce a series of key reference scotch whisky aromas!*
- ✓ *Educate you regarding nosing terminology/vocabulary!*
- ✓ *Explain the scotch whisky nosing and tasting process!*
- ✓ *Identify the key aromas to be found in your favourite single malts!*

It contains 12 aroma nosing samples carefully selected by the leading specialist Aroma Scientist, Dr George Dodd.

This superb kit includes a booklet guide to not only "lead you through" the individual aroma samples but also through a recommended process for scotch whisky nosing and tasting!

So, if you have you ever wanted to know how best to nose scotch whisky and have ever wanted to know what the experts mean by;

- Green/Grassy aroma
- Malty aroma
- Spicy aroma
- Floral aroma
- Woody aroma
- Citrus aroma
- Phenolic aroma
- Peaty aroma

then, the Scotch Whisky Aroma Nosing Kit has the answers you have been looking for – and lots more!

So, whether you are a single malt scotch whisky enthusiast or are looking for a present for a whisky enthusiast, The Scotch Whisky Aroma Nosing Kit is a "must have" item!

As used by:

- Leading Scotch Whisky companies
- Brand Ambassadors
- Scotch Whisky Connoisseurs
- Scotch Whisky Clubs & Societies
- Scotch Whisky Enthusiasts worldwide

\$125 plus \$15 delivery fee

Distillery Feature:



Australians tend to have an ingrained respect for “the quiet achiever.” We admire any individual or organisation that knuckles down, gets on with its business, delivers what it sets out to achieve, but doesn’t shout its name from the rooftops in the process.

Ardmore is one such quiet achiever.

You may not instantly recognise the name (you may even confuse it as a combination of Ardbeg and Aultmore!) but if you’ve been drinking whisky for a while and enjoyed a few blends over the years, chances are you’ve tasted it in one form or another. For a quiet achiever, the irony is that, relatively speaking, it’s actually a huge distillery with a long-established and decorated history.

Ardmore was established in 1898 by Adam Teacher (son of William) to secure malt supplies for the Teacher’s blends, chiefly “Highland Cream”, which was launched in 1863 and is still a market-leading blend today. The distillery is a short drive south of Huntly, putting it right on the eastern fringe of Speyside.

One of the reasons that Ardmore endears itself to malt connoisseurs is that it uses a

higher peating level for its malt than most Highland/Speyside distilleries. Names like Highland Park and Talisker trade on the fact that they offer a slightly smokier experience than others, and Ardmore deserves to be mentioned in the same breath. Whilst the majority of Speyside/Highland distilleries peat their malt to anywhere between 0-5ppm phenols, Ardmore peats to 12-14ppm. And whilst the onsite maltings closed in 1976 and malt is now supplied by a commercial maltster, the peat used still comes from the distillery’s northern peat moss at St. Fergus.

As distilleries go, Ardmore was amongst one of the most traditional when it came to production. The railway siding was still in use up until the 1990’s for delivery of materials, and it was one of the very last distilleries in Scotland to directly fire its stills with coal! The distillery switched to internal steam heating in 2002, and OH&S legislation introduced in 2006 effectively prevents any distillery now from using coal.

The mashtun at Ardmore has an impressive 12.48 tonne capacity and the distillery churns through 300 tonnes of malt each week - both Optic and Concerto barley is currently being used. Each mash produces 60,000 litres of wort, and there are 14 washbacks in total. The distillery has gone through two expansions, in 1958 and 1975, doubling its capacity on both occasions.

Today, there are eight stills, and annual capacity is around five million litres, making it one of the biggest in the land.

The distillery recently (some would say finally) launched a commercially available expression, Ardmore Traditional. Alistair Longwell, Distillery Manager, has the enviable task of keeping the place ticking over, and you can sense the real pride he has in the distillery and the joy he has with his role. Like the best distillery managers, he doesn't just keep the place running, but he's also a tremendous ambassador for the brand.

The Society has bottled some glorious Ardmores over the years, and we had two particularly tasty offerings here in Australia a few years back. This quarter's Outturn sees the return of Ardmore, this time in the form of a juicy refill sherry gorda.

Distilled back in 1998, it's from the days when real, naked flame heated the stills, which is often credited with creating a caramelisation at the base and a rich, robust flavour. As you can see in the tasting notes, the slightly higher peating leads to a gentle smokiness; the spirit retains its Speyside credentials, but the whole experience is then shaped and influenced by the sweetness and spice from the refill sherry gorda. Exactly the kind of dram the Society looks to deliver!

Andrew Derbidge
Cellarmaster & NSW Manager



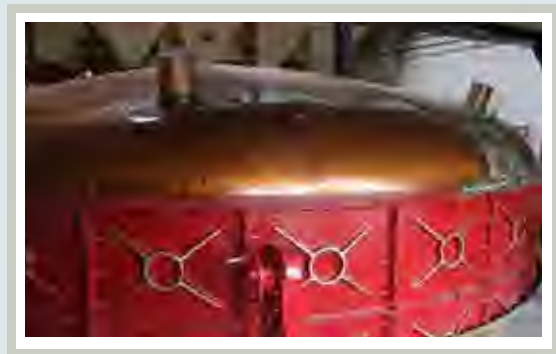
Ardmore's warehouses



Some ex-bourbon barrels slumbering away



The Stillhouse



The 12.48 tonne copper-domed mash tun

What's on

- Nov** Friday 18th November - **Brisbane** - Whisky Tasting
Venue: The Brisbane Club, 243 Adelaide Street, Brisbane (6.00pm for 6.30pm)
Whisky host: Peter Johnston - 0407 372243 or johnston@smws.com.au
-
- Nov** Friday 18th November - **Wollongong** - Whisky Tasting
Venue: Novotel Northbeach Hotel, Cliff Road, North Wollongong (6.30pm for 7.00pm)
Whisky host: Norman Case - 0409 669082 or case@smws.com.au
-
- Nov** Tuesday 22nd November - **Canberra** - Whisky Tasting
Venue: The Deck at Regatta Point, Barrine Drive, Parkes (6.00pm for 6.30pm)
Whisky host: Drew McKinnie - 0447 655717 or mckinnie@smws.com.au
-
- Nov** Wednesday 23rd November - **Melbourne** - Whisky Tasting
WAITLIST Venue: PJ O'Briens, 3 Southgate Ave, Southbank (6.00pm for 6.30pm)
Whisky host: Chris Barnes - 0411 264 114 or barnes@smws.com.au
-
- Nov** Friday 25th November - **Adelaide** - Whisky Tasting
Venue: Public Schools Club, 207 East Terrace, Adelaide (6.00pm for 6.30pm)
Whisky host: Jenny Forrest - 0409 540704 or forrest@smws.com.au
-
- Nov** Wednesday 30th November - **Sydney** - Whisky Tasting
WAITLIST Venue: Royal Automobile Club, 89 Macquarie Street, Sydney (6.30pm for 7.00pm)
Whisky host: Andrew Derbidge - 02 9974 3046 or tawse@smws.com.au
-
- Nov** Wednesday 30th November - **Perth** - Whisky tasting
Venue: Parmelia Hilton, 14 Mill Street, Perth (6.00pm for 6.30pm)
Whisky host: Brian McSkimming - 0407 232772 or mcskimming@smws.com.au
-
- Dec** Thursday 1st December - **Melbourne** - Whisky Tasting
Venue: RACV Club, 501 Bourke Street, Melbourne (6.00pm for 6.30pm)
Whisky host: Chris Barnes - 0411 264 114 or barnes@smws.com.au
-
- Dec** Friday 2nd December - **Sydney** - Whisky Tasting
WAITLIST Venue: Royal Automobile Club, 89 Macquarie Street, Sydney (6.30pm for 7.00pm)
Whisky host: Andrew Derbidge - 02 9974 3046 or tawse@smws.com.au
-
- Dec** Friday 2nd December - **Perth** - Whisky tasting
Venue: Parmelia Hilton, 14 Mill Street, Perth (6.00pm for 6.30pm)
Whisky host: Brian McSkimming - 0407 232772 or mcskimming@smws.com.au
-
- Dec** Friday 9th December - **Melbourne** - Christmas Dinner Extravaganza
Venue: Athenaeum Club, 87 Collins Street, Melbourne (7.00pm for 7.30pm)
Whisky host: Chris Barnes - 0411 264 114 or barnes@smws.com.au
-

The Society *benefits of membership...*



ONE

The exclusive right to purchase the **widest selection** of single cask, single malt whiskies **in the world**, to satisfy the dyed-in-wool whisky buff and curious newcomer alike.

TWO

Invitations to **tastings** and **whisky events** at special Members' only prices at least four times per year across Australia, as well as exclusive Members' only tastings and dinners.

THREE

Exclusive access to **Members' Club Rooms** in London and Edinburgh (with up to 3 guests), Switzerland and a **Tasting Bar** in Tokyo.

FOUR

A wealth of information & news about Scotch malt whisky, the people who make it & those who drink it, available in our quarterly international '**Unfiltered**' magazine and local Newsletter, at tasting events and online.

FIVE

Private tailor-made tasting events at a venue of your choice - corporate or private entertaining with a difference!

SIX

Special offers/rates at the best **boutique hotels** in the UK (Malmaison and Hotel du Vin), some with "Society Snuggles", an area of the bar reserved for Members to enjoy a selection of Society drams.

SEVEN

Special rates and a tasting bar at **Hotel du Vendome** in Paris.

EIGHT

The fellowship of like-minded folk in a **worldwide Club...** with your membership providing access to Member facilities across the Globe.

Please join us.

It's a never-ending whisky adventure...

www.smws.com

Australia • Austria • Benelux • Canada • France • Germany • India • Japan
New Zealand • Poland • South Africa • Sweden • Switzerland • Taiwan • UK • USA



**THE SCOTCH MALT
WHISKY SOCIETY**

The Scotch Malt Whisky Society Pty Ltd

PO Box 1113 Newport NSW 2106

phone: 02 9974 3046 • facsimile: 02 9999 5610

email: info@smws.com.au • web: www.smws.com.au

abn: 33 101 905 560